



Chair: M. Wardlaw, **Vice Chair:** D. Lucas, **Treasurer:** M. Wardlaw
Secretary: L. Lauder **Co-opted Members:** D. Stutchfield, N. Mathers
Members: E. Boyd, P. Mills, J. Wood, S. Moreland

Website www.aboutpittenweem.org.uk/community-council

Email - secretary.pittenweem.cc@outlook.com

Pittenweem Needs You

The current Community Council finishes at the end of September, and a new one must be chosen. Pittenweem Community Council will only continue to exist if residents of the community are willing to stand for membership.

If you are on the electoral roll of Pittenweem and District, are over 16 years old, you can stand to be a Community Councillor. Please come forward as it is vital that the community has a strong voice in representing us and dealing with Fife Council. You can download an application form at www.fife.gov.uk/communitycouncils or pick one up in the library and it must be returned by **August 30th**. If there are more applicants than places, then there will be an election on Thursday 28th September 2023.

Read on to see the sort of work we do, and what a difference you could help make to our community.

The Royal Burgh of Pittenweem and District Community Council is proud to have served the community continuously for 50 years. The current Community Council has had a busy and productive period in office with the following among its many achievements:

- Retention of 'Out of Hours' emergency medical services at the St Andrews Community Hospital
- Restoration of the Pittenweem Tollbooth Steeple, repair of the clock faces, and the High Street benches
- Planning for the Shared Use Path for walkers and cyclists from Anstruther to Earlsferry
- Slowing down traffic coming into Pittenweem with dynamic 3-2-1 signs.
- Recovery of the Pittenweem Common Good Fund
- Working with the West Braes Project to celebrate the Queens Platinum Jubilee
- Planting of the Queens Green Canopy wood in the Recreation Ground involving Primary School children
- initiation of a Pittenweem Community consultation including household surveys, Sustainability festival and consultation with Primary School children.
- A Local Place Plan is being developed and involvement of the community in this.

Pittenweem Community Consultation & Local Place Plan

www.aboutpittenweem.org.uk/consult.html

Help us develop a Local Place Plan – our new logo was selected by the community council after a competition from Pittenweem Primary School children.

We are finalising the Place Plan this year and we need your input. Are there any actions, steps, or projects that you'd like to see to help Pittenweem thrive?

What is a Local Place Plan? – part of the Government's wider work on planning reform and implementation of the **Planning (Scotland) Act 2019**, including **steps to improve community engagement and build public trust in planning matters**. It must also sit within the plan for Fife and the National Planning Framework but gives you an opportunity to create proposals for the development and use of land in the place where you live.

In 2022 the community council surveyed all households for the 3 likes, concerns and improvements. The survey report detailing the results is available at Pittenweem Library or: www.aboutpittenweem.org.uk/consult.html



Then in spring 2023 we held the Sustainability Festival, opened by our 3 councillors and looking at active travel around Pittenweem, results of consultations with the community and with the primary schoolchildren -

https://youtu.be/V7_krkBr10g

We also had solar panel contractors, and Cosy Kingdom advisors on hand to give advice on how to reduce your fuel bills and stay cosy, whilst the library volunteers provided activities for the children.

We are still looking for your ideas and we will add them to what we've learned and share them with the community which will help prioritise what to work on over the coming months and years.

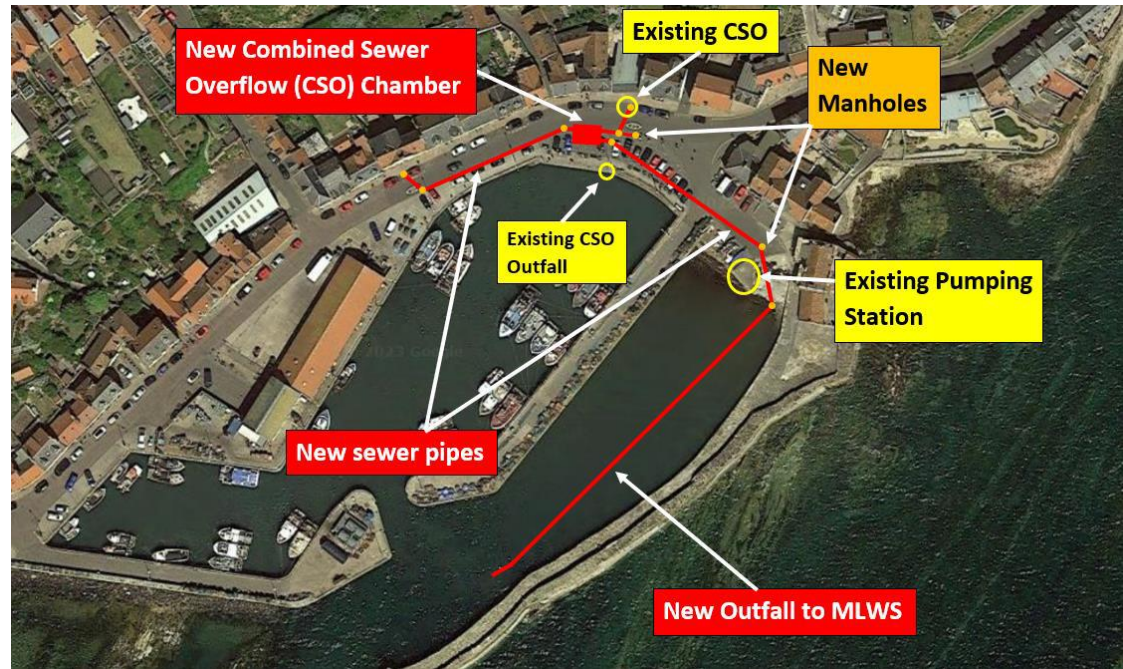
We will ask you to come along in a few months' time to look at our first draft.



Information on Scottish Water works in Pittenweem September 2023

See www.scottishwater.co.uk/Pittenweem, works involve:

1. East Shore – Upgrade to the existing CSO (Combined Sewer Overflow) and new outfall at East Shore.
2. West Shore – Upgrade to existing CSO and replacement of outfall at West Shore.
3. Seaview Row



3. Seaview Row
Flooding – Works are currently being developed regards this section with the aim to remove surface water flows from the sewer network from the area around Sandycraig Road, Toft Crescent & Queen Elizabeth Road. This work is phased over several winters.

West Braes car park review by Fife Coast and Countryside Trust(FCCT)

The introduction of the Parking Charge Notification Scheme enabled FCCT to properly manage the car parks, as without this, vehicles causing a nuisance were only committing a trespass offence.

Parking charges started from 1st June, and this income allows better management:

- The car park is managed by FCCT employees who visit at random times at least once between 6am and 10pm – with 3 operatives working 30 hours per week covering all 9 FCCT car parks.
- The car park had been resurfaced earlier this year and there is an income to support future maintenance.
- The litter bins are now emptied every day instead of thrice weekly.
- The public toilets are now open daily from 1st April to end of October, even though Fife Council only funds weekend opening in the off season.
- Improvements are planned to the public toilets later in the year.
- The user profile of the car parks has changed with the quiet overnight parking, and there is an improved tourist profile.

FCCT will review the operation in late autumn – to ensure your view is heard, please contact Robbie Blyth of FCCT directly on robbie.blyth@fifecountryside.co.uk

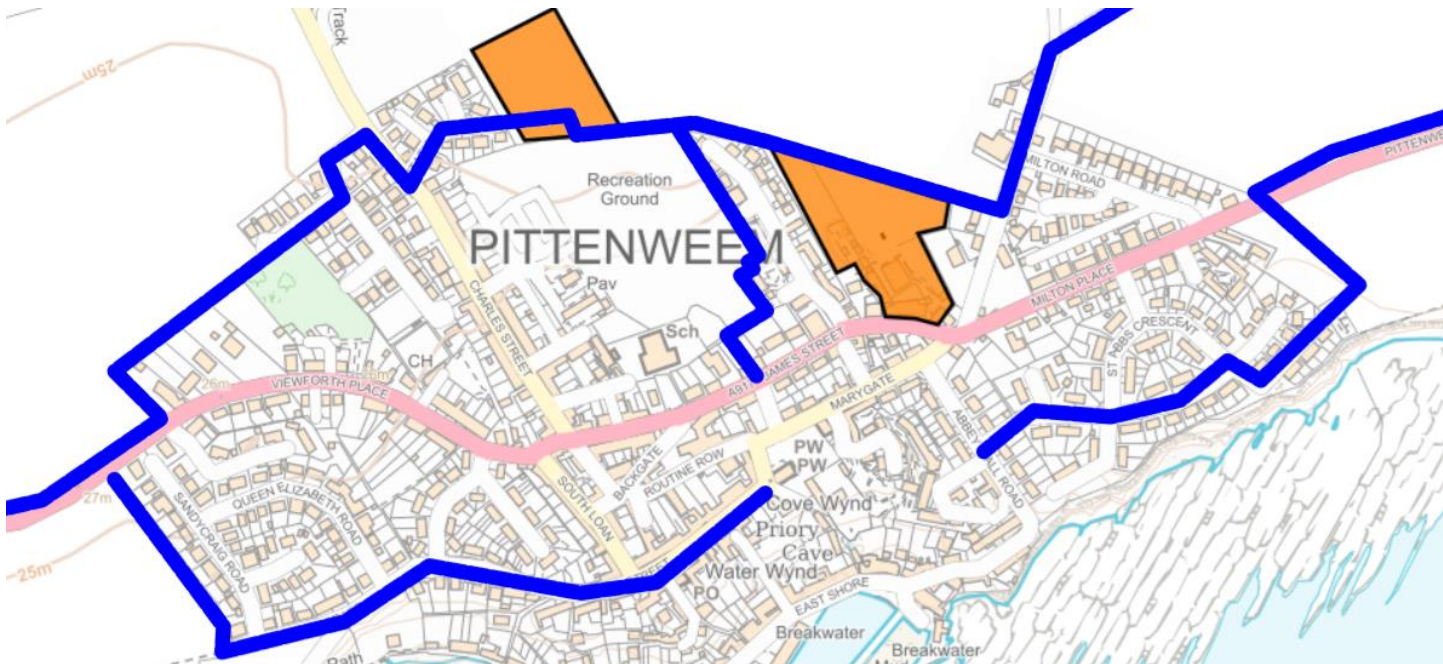
Information on Earlsferry to Pittenweem Shared Path



www.eastneukcap.co.uk/bike-path-project/

BACKGROUND	PROJECT AIM
<p>Active travel is enjoying a widespread rise in popularity in East Neuk, but the lack of good paths leaves the only option of using the busy A917 road which many are unwilling to do.</p> 	<p>To establish a shared use cycle path from Earlsferry to Pittenweem, via Elie and St Monans.</p> <p>This is part of a broader project to connect the communities along the Fife coastline together to provide people with a safe, practical means of cycling in the area to provide safe, continuous and convenient bike routes for all kinds of people for everyday journeys.</p>

After two years of feasibility, consultation, and engagement, we completed the route options appraisal and identified three potential shared path routes. Last summer, we completed the plans for the proposed main route between the villages and the subsidiary routes within the villages. We are now working closely with landowners and their agents throughout negotiations for land agreements. We anticipate completing stage 2 (design stage and landowner negotiations) in December 2023, and we hope to complete the build of the shared path by the end of 2025.



Proposed path routes are in bold, and new housing developments are shaded areas. Please send any comments to secretary.pittenweem.cc@outlook.com

Please come and join the Community Council to continue all our vital work